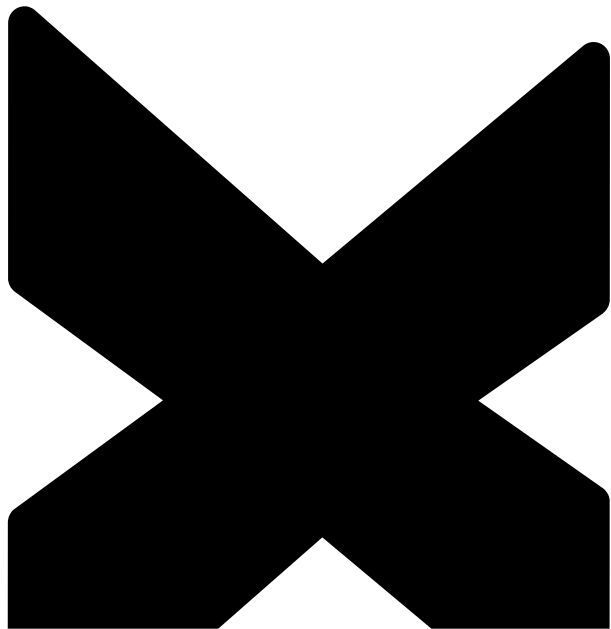


SIXPACK



EN

Vertic

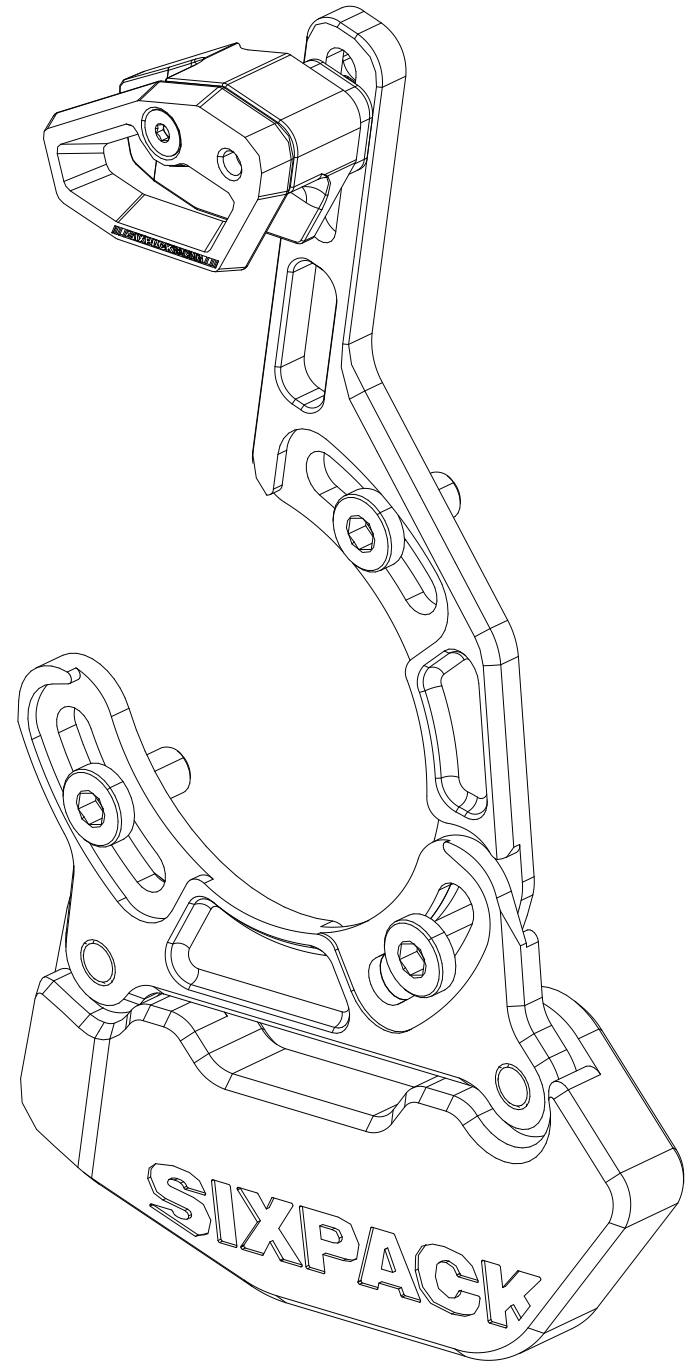
User Manual

Chain Guide



Content

Intended use	6
Compatibility	7
Guarantee / Crash Replacement	7
Setting the taco	8
Mounting Vertic Lower	9
Mounting Vertic Upper	10
Mounting Vertic Complete	12
Adjusting the chain guide	13
After a crash	14
Care and maintenance	15





Intended use

The Sixpack VERTIC chain guide is designed for category 5 according to ASTM F2043:

Category 5: Extreme use (downhill, freeride, dirt)

Category 5 includes the use of bikes and their components under the conditions of categories 1, 2, 3 and 4 as well as in demanding, heavily blocked and extremely steep terrain, which can only be mastered by technically experienced and very well trained riders. In this category, big jumps are to be expected as well as intensive use in bike parks or on downhill tracks. With these bikes it is essential to ensure that after each ride an intensive check for possible damage is carried out. Pre-damages can lead to failure even if further stresses are significantly lower. A regular replacement of safety-relevant components should also be considered. Wearing appropriate protective gear is absolutely essential. Long travel full-suspension bikes but also dirt bikes characterize this category.

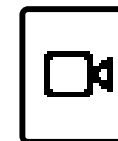
Compatibility

The chain guide can be mounted on bikes with an ISCG 05 mount. No functional guarantee can be given when using ISCG 05 adapters.

The chain guide is compatible with Narrow-Wide and normal chainrings with 28 to 36 teeth. From the factory, the chain guide is delivered with the taco for 30 to 32 teeth, mounted in the position for 32 teeth.

Guarantee / Crash Replacement

The statutory warranty applies to all components. If damage occurs outside the warranty, contact us and we try to find an individual solution.



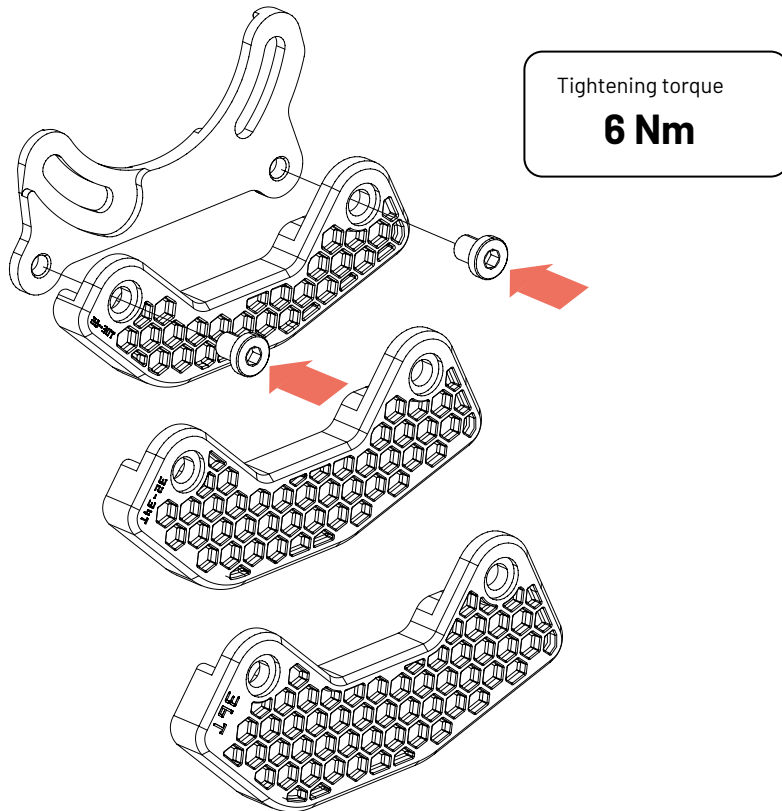
Assembly video

Scan the code and watch the video.



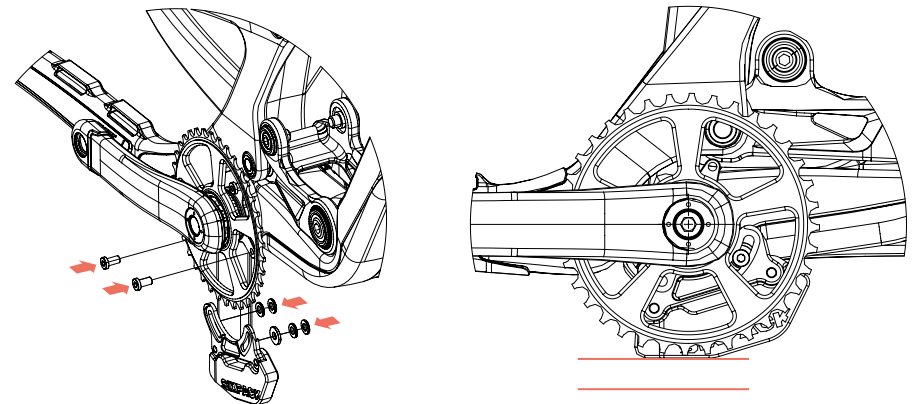
Mounting the taco

- 1 Select the appropriate taco to your chainring.
- 2 Fasten the taco to the base plate with the two mounting screws.



Mounting Vertic Bash Guard

- 1 Position the chain guide on the ISCG mount of the bike and the screws in the threads without tightening them. Check whether there is sufficient clearance between the base plate of the chain guide, the frame/rear triangle and other components of the bicycle. Also, check to see if the chain guide mounting bolts may be protruding from the back of the ISCG mount and touching the frame/rear triangle or other components of the bike. For full suspension bikes, check for possible contact points between chain guide incl. mounting bolts and frame/rear triangle or other components of the bike even when fully compressed. In case of contact between chain guide incl. mounting bolts and frame/rear triangle or other components of the bike, use the enclosed washers accordingly.
- 2 Align the chain guide parallel to the ground and tighten the mounting bolts with maximum torque of 6Nm.

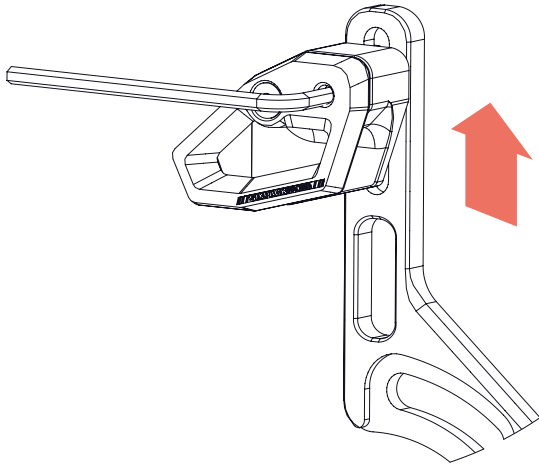




Mounting Vertic Upper Guide

1

Slightly loosen the screw of the upper guide element and push it all the way up.

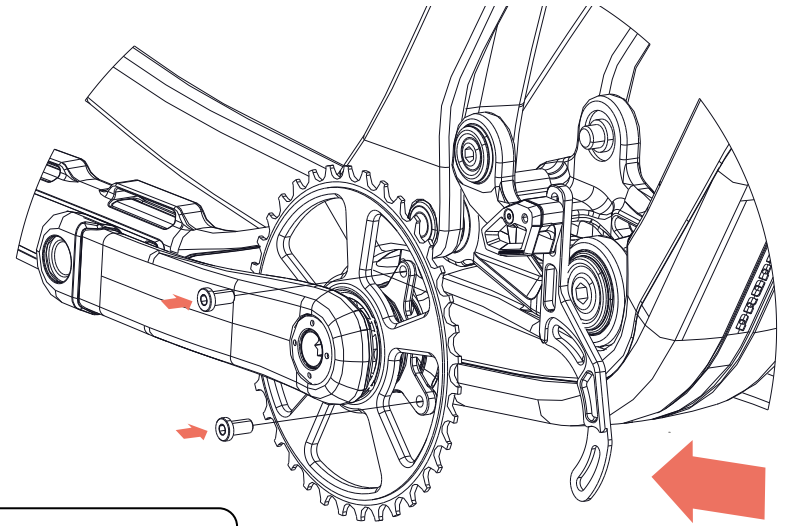


2

Slide the chain guide into position.

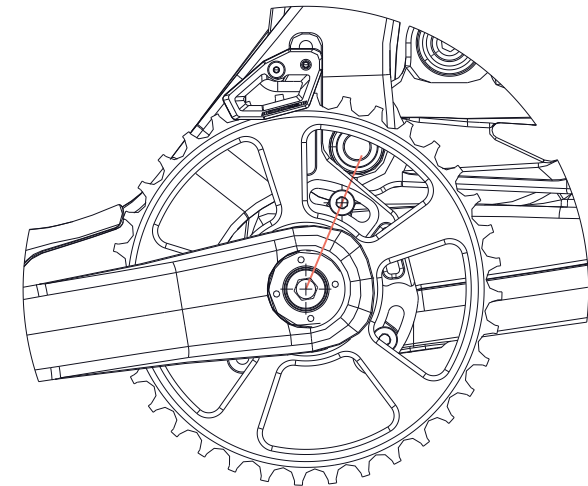
3

Align the chain guide to the center of the adjustment range and screw the two mounting screws into the threads of the ISCG mount on the bike frame.



Tightening torque

6 Nm

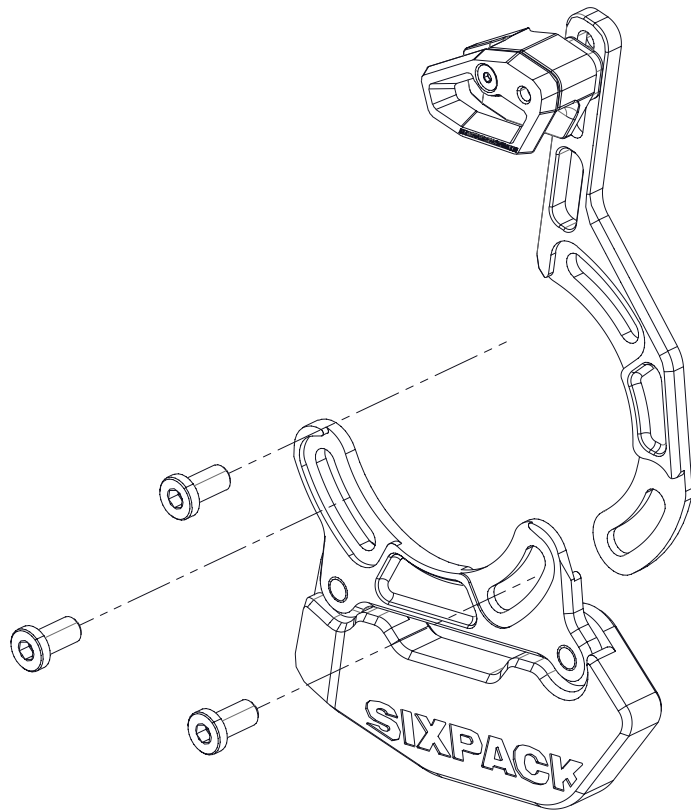




Mounting complete Vertic Chain Guide

1

For the assembly of the complete Vertic Chain Guide, follow the individual instructions of Vertic Upper Chain Guide / Bash Guard.

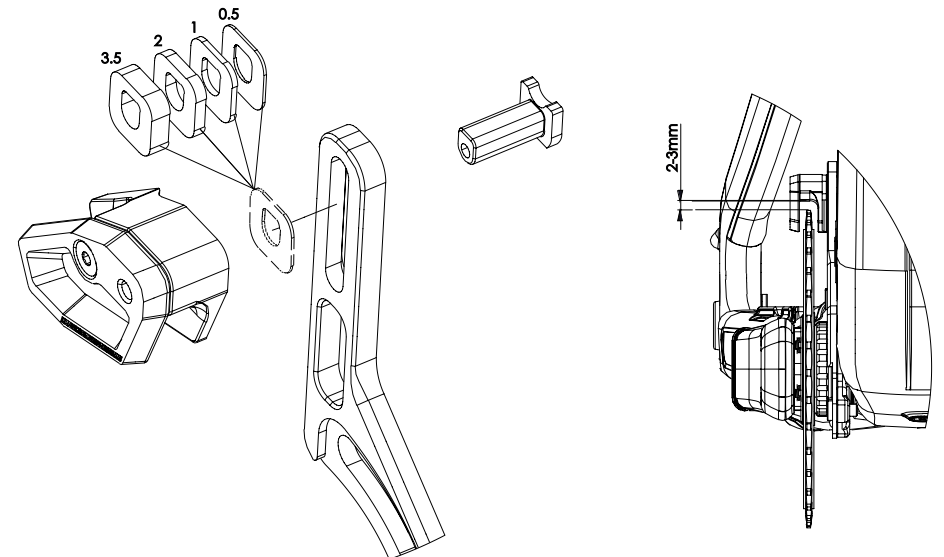


Adjusting the chain guide

1

Check the position of the chainring to the upper guide element.

- The chainring should be approximately in the middle of the upper guide element.
- Use the chainline spacers from the scope of delivery (3.5 / 2 / 1 / 0.5 mm) accordingly so that the chainring is in the middle of the upper guide element.
- Adjust the height of the upper guide element to 2-3 mm above the chainring.
- Tighten the mounting screw with max. 1.5 Nm.





After a crash



DANGER

Danger of accident due to a damaged or broken chain guide!

- Replace your chain guide in case of damage.
- We recommend replacing the chain guide after heavy crashes with force acting on parts of the chain guide.
- If you have any doubts or questions, you must seek the help of a trained bicycle mechanic or the Sixpack Service!

Care and maintenance

The following activities must be carried out regularly:

- Check the tightening torque of all screws regularly and retighten to the specific torque if necessary.
- Clean the chain guide regularly with clear water or mild cleaner. Observe the application recommendations of the cleaner used.
- Check the chain guide regularly for cracks, deformation, discoloration or other signs of damage. A damaged chain guide must not be used any further!
- We recommend replacing the chain guide regularly in regular racing use.
- If you have any doubts or questions, you must seek the help of a trained bicycle mechanic or the Sixpack Service!